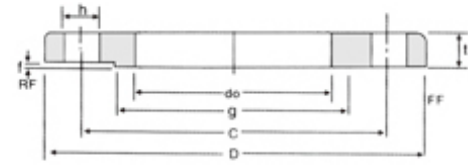


## 南非标 法兰参数系列

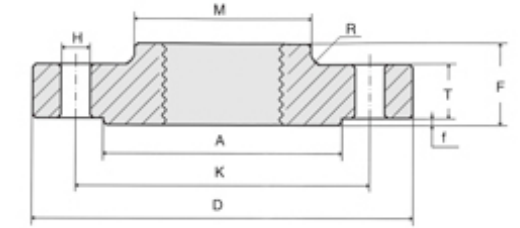
SABS 1123-1600/3	95
SABS 1123-1600/4	96
BS 10 TABLE D SCREWED	97
BS 10 TABLE D	98
BS 10 TABLE E	99

SABS 1123-1600/3



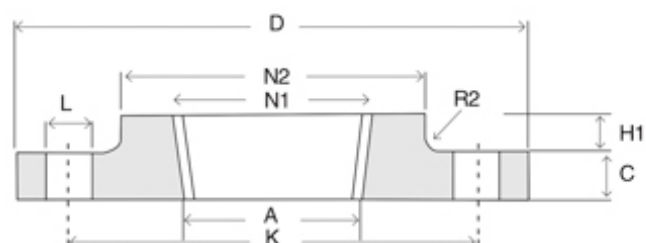
Nominal Pipe Size	Outside Diam	Pipe	BORE	Thickness	Bolt circle diam	Raise Face		Diam of Bolt	Number of holes	Weight / kg	
						g	f			Slip on	Blind
1600/3	D	OD	do	t	C	g	f	H	N	Slip on	Blind
15MM	95	21.3	22	10	65	45	2	14	4	0.48	0.51
20MM	105	26.9	27.6	10	75	58	2	14	4	0.58	0.63
25MM	115	33.7	34.4	10	85	68	2	14	4	0.69	0.77
32MM	140	42.4	43.1	10	100	78	2	18	4	1.01	1.13
40MM	150	48.3	49	10	110	88	3	18	4	1.16	1.31
50MM	165	60.3	61.1	12	125	102	3	18	4	1.64	1.92
65MM	185	76.1	77.1	12	145	122	3	18	4	1.99	2.44
80MM	200	88.9	90.3	14	160	138	3	18	8	2.52	3.23
100MM	220	114.3	115.9	14	180	158	3	18	8	2.8	3.96
125MM	250	139.7	141.6	16	210	188	3	18	8	3.96	5.91
150MM	285	168.3	170.5	18	240	212	3	22	8	5.47	8.59
200MM	340	219.1	221.8	22	295	268	3	22	12	8.29	14.9
250MM	405	273	276.2	25	355	320	3	26	12	12.4	24.05
300MM	460	323.9	327.6	28	410	378	4	26	12	16.82	35.15
350MM	520	355.6	359.7	30	470	438	4	26	16	24.37	48.05
400MM	580	406.4	411	35	525	490	4	26	16	34.42	70.31
450MM	640	457	462.5	40	585	550	4	26	20	45.83	97.75
500MM	715	508	513.6	40	650	610	4	33	20	56.69	120.8
600MM	840	610	616.5	50	770	725	5	33	20	95.19	210.96

SABS 1123-1600/4



压力	口径	外径	中心距	孔径	孔数	内径	盘厚	总高	突台径	R	台径	台高	RF 单重	FF 单重
PN	DN	D	K	H	---	BSP	T	F	M	R	A	f	KG	KG
Nominal pressure 1600/4kPa	10	90	60	14	4	15.00	8	14	30	4	40	2	0.38	0.45
	15	95	65	14	4	17.00	8	14	35	4	45	2	0.44	0.51
	20	105	75	14	4	22.50	8	16	45	4	58	2	0.57	0.66
	25	115	85	14	4	29.00	8	16	52	4	68	2	0.69	0.78
	32	140	100	18	4	37.50	10	20	60	6	78	2	1.21	1.36
	40	150	110	18	4	43.50	10	20	70	6	88	3	1.43	1.68
	50	165	125	18	4	55.00	12	22	85	6	102	3	2.01	2.30
	65	185	145	18	4	71.00	12	26	105	6	122	3	2.65	2.99
	80	200	160	18	8	83.50	14	28	118	8	138	3	3.32	3.66
	100	220	180	18	8	108.50	14	34	140	8	158	3	4.01	4.39
	*125	250	210	18	8	134.00	16	38	168	8	188	3	5.67	6.12
	150	285	240	22	8	159.50	18	40	195	10	212	3	7.60	8.20

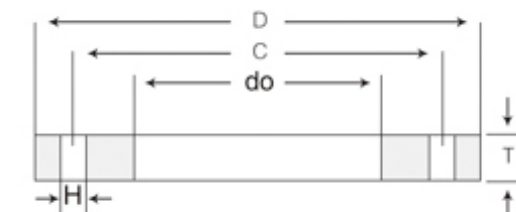
### BS 10 TABLE D SCREWED



N.B Size	外径	中心距	孔径	内径	板厚	大内径	颈外径	颈高		孔数	单重	
	D	K	L	A	C	N1	N2	H1	R2	No. Holes	Unit Weight	
Ins	mm	mm	mm	mm	mm	mm	mm	mm			KG	
1/2 "	15	95.3	66.8	14.5	18.7	4.8	19.7	33.3	9.5	1.6	4	0.28
3/4 "	20	101.6	73.2	14.5	24.3	4.8	25.3	38.1	11.1	1.6	4	0.32
1 "	25	114.3	82.6	14.5	30.5	4.8	31.7	47.6	11.1	1.6	4	0.43
1 1/4 "	32	120.7	87.4	14.5	39	6.4	40.4	55.6	11.1	1.6	4	0.59
1 1/2 "	40	133.4	98.6	14.5	44.9	6.4	46.3	61.9	12.7	1.6	4	0.73
2 "	50	152.4	114.3	17.5	56.7	7.9	58	74.6	12.7	1.6	4	1.1
2 1/2 "	65	165.1	127	17.5	72.2	7.9	73.7	90.5	15.9	1.6	4	1.31
3 "	80	184.2	146.1	17.5	85	9.7	86.5	106.4	15.9	1.6	4	1.93
4 "	100	215.9	177.8	17.5	110.1	9.7	111.6	133.4	19.1	3.2	4	2.66
5 "	125	254	209.6	17.5	137	12.7	138.5	160.3	19.1	3.2	8	4.21
6 "	150	279.4	235	17.5	164.5	12.7	166	185.7	19.1	3.2	8	4.68
8 "	200	336.6	292.1	17.5	215.5	12.7	217	241.3	22.2	3.2	8	6.66
10 "	250	406.4	355.6	22.2	269.5	16	271	298.5	27	3.2	8	11.49
12 "	300	457.2	406.4	22.2	321	19.1	322.5	349.3	28.6	4.8	12	15.14

### BS10 TABLE D

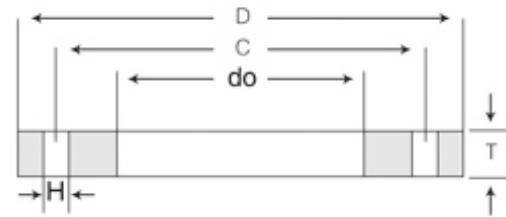
BS10:1962



Nominal Pipe Size	Outside Diam	BORE	Thickness	Bolt circle diam	Diam of Bolt	Number of holes	Weight / kg	
							Slip on	Blind
T/D	D	do	T	C	H	N		
15MM	95.3	22	4.8	66.7	14.3	4	0.23	0.25
20MM	101.6	27.6	4.8	73	14.3	4	0.26	0.29
25MM	114.3	34.4	4.8	82.6	14.3	4	0.33	0.37
32MM	120.7	43.1	6.4	87.3	14.3	4	0.46	0.55
40MM	133.4	49	6.4	98.4	14.3	4	0.56	0.68
50MM	152.4	61.1	7.9	114.3	17.5	4	0.89	1.08
65MM	165.1	77.1	7.9	127	17.5	4	0.97	1.28
80MM	184.2	90.3	9.5	146.1	17.5	4	1.43	1.93
100MM	215.9	115.9	9.5	177.8	17.5	4	1.87	2.67
125MM	254	141.6	12.7	209.6	17.5	8	3.31	4.90
150MM	279.4	170.5	12.7	235	17.5	8	3.72	5.96
200MM	336.6	221.8	12.7	292.1	17.5	8	4.87	8.72
250MM	406.4	276.2	15.9	355.6	22.2	8	8.41	15.92
300MM	457.2	327.6	19.1	406.4	22.2	12	11.37	24.12
350MM	527.1	359.7	22.2	469.9	25.4	12	19.47	37.24
400MM	577.9	411.0	22.2	520.7	25.4	12	21.92	44.93
450MM	641.4	462.5	25.4	584.2	25.4	12	30.29	63.54
500MM	704.9	513.6	28.6	641.4	25.4	16	40.03	86.29
600MM	825.5	616.5	31.8	755.7	28.6	16	57.5	131.68

### BS10 TABLE E

BS10:1962



Nominal Pipe Size	Outside Diam	BORE	Thickness	Bolt circle diam	Diam of Bolt	Number of holes	Weight / kg	
							Slip on	Blind
T/E	D	do	T	C	H	N		
15MM	95.3	22	6.4	66.7	14.3	4	0.3	0.33
20MM	101.6	27.6	6.4	73.0	14.3	4	0.34	0.38
25MM	114.3	34.4	7.1	82.6	14.3	4	0.48	0.54
32MM	120.7	43.1	7.9	87.3	14.3	4	0.58	0.68
40MM	133.4	49	8.7	98.4	14.3	4	0.78	0.92
50MM	152.4	61.1	9.5	114.3	17.5	4	1.07	1.30
65MM	165.1	77.1	10.3	127.0	17.5	4	1.27	1.67
80MM	184.2	90.3	11.1	146.1	17.5	4	1.67	2.25
100MM	215.9	115.9	12.7	177.8	17.5	8	2.47	3.49
125MM	254	141.6	14.3	209.6	17.5	8	3.73	5.51
150MM	279.4	170.5	17.5	235	22.2	8	4.96	8.12
200MM	336.6	221.8	19.1	292.1	22.2	8	7.11	13.01
250MM	406.4	276.2	22.2	355.6	22.2	12	11.47	22.03
300MM	457.2	327.6	25.4	406.4	25.4	12	14.91	31.83
350MM	527.1	359.7	28.6	469.9	25.4	12	25.09	47.98
400MM	577.9	411.0	31.8	520.7	25.4	12	31.4	64.36
450MM	641.4	462.5	34.9	584.2	25.4	16	41.06	86.88
500MM	704.9	513.6	38.1	641.4	25.4	16	53.32	114.95
600MM	825.5	616.5	47.6	755.7	31.8	16	85.16	196.3

### COMPARISON FLANGE BORES OF WELDING NECK FLANGE FOR ANSI WITH JIS

Unit:mm

NOMINAL PIPE SIZE	O.D		SCH10		SCH20		SCH30		STD	SCH40		SCH60		XH	SCH80		SCH100		SCH120		SCH140		SCH160		XXH			
	JIS	ANSI	JIS	ANSI	JIS	ANSI	JIS	ANSI	ANSI	JIS	ANSI	JIS	ANSI	ANSI	JIS	ANSI	JIS	ANSI	JIS	ANSI	JIS	ANSI	JIS	ANSI	JIS	ANSI	ANSI	
1/2"	21.7	21.34	-	-	-	-	-	-	15.798	16.1	15.798	15.3	-	13.87	14.3	13.87	-	-	-	-	-	-	-	-	12.3	11.84	6.4	
3/4"	27.2	26.67	-	-	-	-	-	-	20.929	21.4	20.929	20.4	-	18.85	19.4	18.85	-	-	-	-	-	-	-	-	16.2	15.60	11.02	
1"	34.0	33.40	-	-	-	-	-	-	26.65	27.2	26.65	26.2	-	24.31	25.0	24.31	-	-	-	-	-	-	-	-	21.2	20.70	15.22	
1 1/4"	42.7	42.16	-	-	-	-	-	-	35.05	35.5	35.05	33.7	-	32.46	32.9	32.46	-	-	-	-	-	-	-	-	29.9	29.47	22.76	
1 1/2"	48.6	48.26	-	-	-	-	-	-	40.89	41.2	40.89	39.6	-	38.10	38.4	38.1	-	-	-	-	-	-	-	-	34.4	33.99	27.94	
2"	60.5	60.33	-	-	54.1	-	-	-	52.5	52.7	52.50	50.7	-	49.25	49.5	49.25	-	-	-	-	-	-	-	-	43.1	42.90	38.18	
2 1/2"	76.3	73.03	-	-	67.3	-	-	-	62.713	65.9	62.71	64.3	-	59.00	62.3	59.00	-	-	-	-	-	-	-	-	57.3	53.98	44.98	
3"	89.1	88.90	-	-	80.1	-	-	-	77.93	78.1	77.93	75.9	-	73.66	73.9	73.66	-	-	-	-	-	-	-	-	66.9	66.65	58.42	
3 1/2"	101.6	101.60	-	-	92.6	-	-	-	90.12	90.2	90.12	87.6	-	85.45	85.4	85.45	-	-	-	-	-	-	-	-	76.2	-	-	
4"	114.3	114.30	-	-	104.5	-	-	-	102.26	102.3	102.26	100.1	-	97.18	97.1	96.18	-	-	92.1	92.05	-	-	-	-	87.3	87.33	80.06	
5"	139.8	141.30	-	-	129.6	-	-	-	128.19	126.6	128.19	123.6	-	122.25	120.8	122.25	-	-	114.4	115.90	-	-	-	-	108.0	109.55	103.20	
6"	165.2	168.28	-	-	154.2	-	-	-	154	151	154.0	146.6	-	146.33	143.2	146.33	-	-	136.6	139.73	-	-	-	-	128.8	131.8	124.38	
8"	216.3	219.08	-	-	203.5	206.38	202.3	205.0	202.72	199.9	202.72	195.7	198.45	193.68	190.9	193.68	186.1	188.95	179.9	182.60	175.1	177.83	170.3	173.05	174.63	-	-	
10"	267.4	273.05	-	-	254.5	260.35	251.7	257.45	254.51	248.7	254.51	242.0	247.65	247.65	237.2	242.93	230.9	236.58	224.5	230.23	216.5	222.25	210.2	215.90	-	-	-	
12"	318.5	323.85	-	-	305.7	311.15	301.7	307.09	304.8	297.9	303.23	289.9	295.30	298.45	283.7	288.95	275.7	281.03	267.7	273.05	261.3	266.7	251.9	257.20	-	-	-	
14"	355.6	355.60	342.8	342.9	339.8	339.70	336.6	336.55	336.55	333	333.35	325.4	325.48	330.2	317.6	317.50	308.0	308.0	300.0	300.08	292.0	292.1	284.2	284.18	-	-	-	
16"	406.4	406.40	393.6	393.7	390.6	390.53	387.4	387.35	387.35	381.0	381.0	373.4	373.07	381.0	363.6	363.58	353.0	354.03	344.6	344.53	333.4	333.35	325.4	325.48	-	-	-	
18"	457.2	457.20	444.4	444.5	441.4	441.33	435.0	434.95	438.15	428.6	428.65	419.2	419.1	431.8	409.6	409.6	398.4	398.4	387.4	387.35	377.8	377.85	366.8	366.73	-	-	-	
20"	508.0	508.0	495.2	495.3	489.0	489.95	482.6	482.60	488.95	477.8	477.88	466.8	466.75	482.6	455.6	455.63	443.0	442.93	431.8	431.80	419.2	419.10	408.0	408.03	-	-	-	
24"	-	609.6	-	-	-	590.55	-	581.05	590.55	-	574.8	-	560.43	584.2	-	547.73	-	531.83	-	517.55	-	504.85	-	490.58	-	-	-	-
30"	-	762.0	-	-	-	736.6	-	730.25	742.95	-	-	-	-	736.6	-	-	-	-	-	-	-	-	-	-	-	-	-	-