

# ASTM A182 FLANGES ANSI B16.47 INDEX

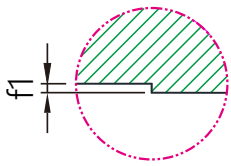
30" CLASS 125# W/150# MSS BOLTING PATTERN ..... 51

36" CLASS 125# W/150# MSS BOLTING PATTERN ..... 52

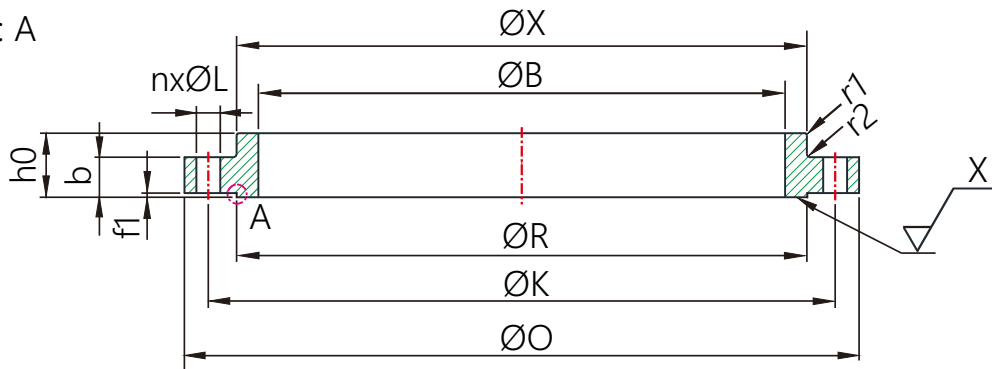
JS FITTINGS

# ASTM A182 FLANGES ANSI B16.47

## 30" Class 125# W/150# MSS Bolting Pattern



Details: A



### DIMENSIONS

unit : inch

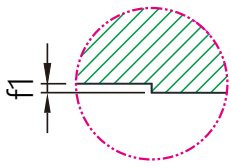
DESCRIPTION	ØO	ØB	b	h0	ØX	ØR	n	ØL	ØK	r1	r2	f1
PART NUMBER 1E19550-Ma	38.75	30.25	2.12	3.5	32.75	33.75	28	1.38	36	0.12	0.59	0.06
TOLERANCE	±1/8	+1/16 -0.0	+1/8 -0.0	+1/16 -1/8	±1/8	±1/64	-	±0.02	±1/16	~	min.	±0.02

√ Rz40 (√)

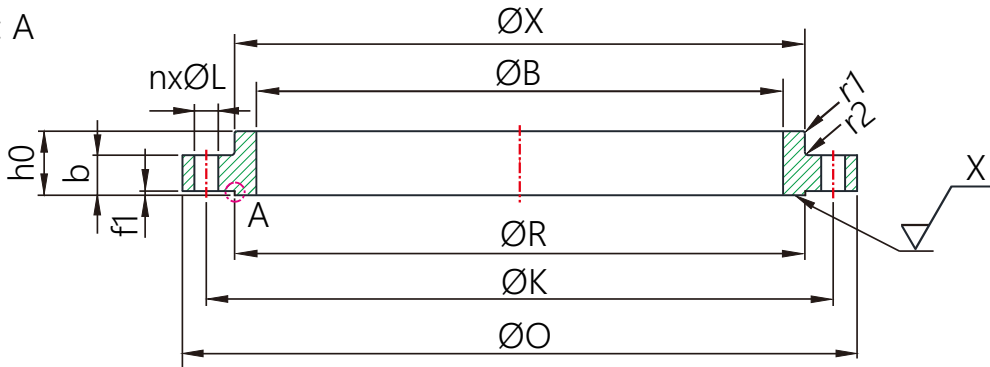
√<sup>X</sup> = Sealing Shall Be Machined With :  
corner radius = 0.06inch.

# ASTM A182 FLANGES ANSI B16.47

## 36" Class 125# W/150# MSS Bolting Pattern



Details: A



### DIMENSIONS

unit : inch

DESCRIPTION	ØO	ØB	b	h0	ØX	ØR	n	ØL	ØK	r1	r2	f1
PART NUMBER 1E19551-Ma	46	36.25	2.38	3.75	39.25	40.25	32	1.63	42.75	0.12	0.63	0.06
TOLERANCE	±1/8	+1/16 -0.0	+1/8 -0.0	+1/16 -1/8	±1/8	±1/64	-	±0.02	±1/16	~	min.	±0.02

√ Rz40 (√)

√<sup>X</sup>  
=Sealing Shall Be Machined With :  
corner radius = 0.06inch.